

FDA-CBER
Approves
Expanded
Access for
DeltaRex-G

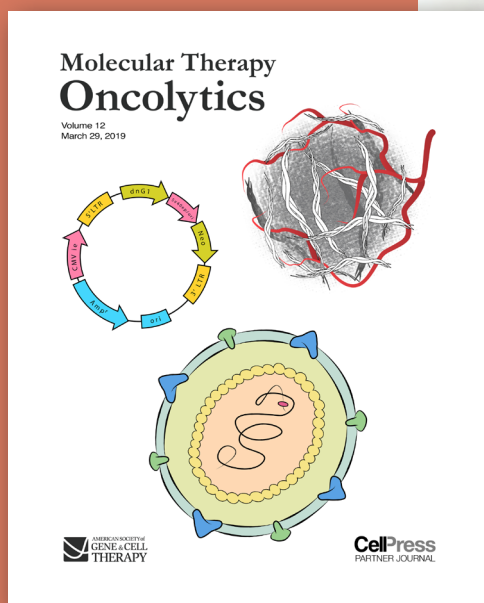
Off-the-Shelf
Injectable
Gene Therapy

For Advanced
Pancreatic
Cancer and
Sarcoma



AVENI
FOUNDATION

*Gene Targeted Therapies
for cancer*



ANNUAL REPORT 2019

www.avenifoundation.org

DeltaRex-G:
A Long
Track Record
of Safety

Cures are
evident with
NO late side
effects



MISSION

To expedite development of gene targeted treatments for cancer and other unmet medical needs

HAPPENING NOW

NCT04091295

www.clinicaltrials.gov

Stage 4 cancer patients are being treated with DeltaRex-G, a tumor targeted genetic medicine with little to no side effects and long term (12-year) survivors.

For more information, visit us at: www.avenifoundation.org



MESSAGE FROM THE PRESIDENT

The Aveni Foundation is an IRS sanctioned 501(c)(3) public charity whose mission is to expedite the development of tumor and gene-targeted technologies for cancer and other unmet medical needs.

Founded in May 2018, the Foundation's 5-year goal is to raise \$10M USD for specific projects that aim to develop new cancer therapies WITHOUT the toxic side effects of chemotherapy.

The first clinical product, DeltaRex-G — has gained USFDA regulatory approval for expanded access and “right to try” for advanced pancreatic cancer and sarcoma for an intermediate size population. To grant this type of approval, the FDA requires proof of safety and efficacy in early clinical trials.

Today, patients are being treated with DeltaRex-G and are experiencing clinical benefit including pain relief and improvement in quality of life. Improved versions of DeltaRex-G and DeltaVax, a cancer vaccine, are forthcoming.

We are grateful to you, our donors, and appeal to your generosity for additional contributions and endowments to realize our goal of making cancer a disease of the past.

A handwritten signature in black ink that reads "Erlinda Maria Gordon". The signature is written in a cursive style and is positioned above a horizontal line.

Erlinda M. Gordon, MD

The Aveni Foundation was named in honor of Fr. Joseph Aveni, a Rogationist priest who benefited significantly from DeltaRex-G gene therapy and whose cause of canonization is on-going.



OUR INSPIRATION

Long Term Cancer Survivors After DeltaRex-G Gene Therapy



*Pancreatic Cancer
12 years*



*Osetosarcoma
12 years*



*Breast Cancer
12 years*



*B Cell Lymphoma
11 years*



*Osetosarcoma
11 years*

SPECIAL EVENTS

In Y2019, the Foundation raised over **\$1 Million USD** through philanthropic donations and fundraising events.



A Tribute to Alvin de Guzman

Al was a fiercely talented musician with a modest, loyal, caring spirit. He died in 2017, after a 3-year battle with sarcoma. His childhood friends, Ritchie Tuazon and Stella Abrera coordinated the ArtistsforAveni fundraising event in memoriam.



Stella Abrera and The American Ballet Theatre Studio Company danced at the ArtistsforAveni Fund Raising Event, November 14, 2019 and raised over \$100,000.

SPECIAL EVENTS

A Tribute to Jim Finn

James B. Finn (February 9, 1949 - January 20, 2018) of Wofford Heights, CA, was a celebrated PGA golf professional who was employed for over 25 years and dearly loved by the Red Hill Country Club members. On October 23, 2018, a Ladies Golf Tournament was held at the Red Hill Country Club in Rancho Cucamonga in honor of Jim who died of rhabdomyosarcoma. Jim was treated at the Cancer Center of Southern California/Sarcoma Oncology Center in Santa Monica CA and participated in a Phase 1/2 clinical trial aimed at vaccinating him against his sarcoma. Jim's wife, Tina, made it her mission to raise money towards finding a cure for sarcoma.

The Aveni Foundation is grateful to Tina and the Red Hill Country Club members for their generous donations, and will acknowledge their support in future research publications.



 AVENI FOUNDATION

| Alternatives for cancer patients

| www.avenifoundation.org

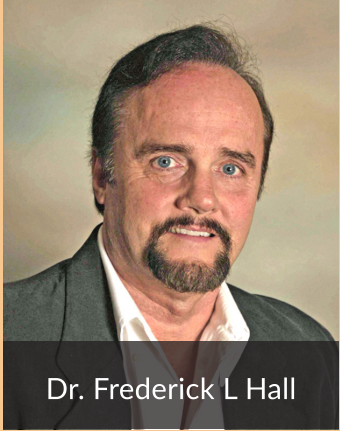


Aimee Cho, golf professional



The James B. Finn Golf Tournament held at the Red Hill Country Club, Rancho Cucamonga, on Nov. 18, 2019 raised over \$40,000.

Y2019 KEY MILESTONE ACCOMPLISHMENTS



Dr. Frederick L Hall

Inventor, DeltaRex-G

Raised over **\$1M USD** from philanthropic donations and fundraising events

Manufactured **clinical grade DeltaRex-G** gene vector for compassionate use in patients with advanced cancer

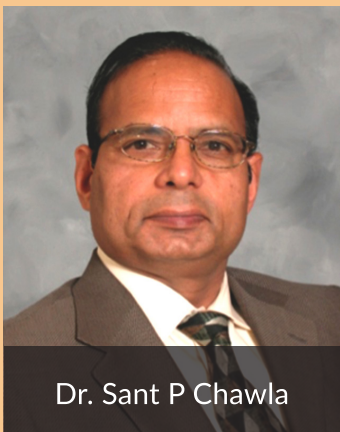


Dr. Erlinda M. Gordon

*Inventor, DeltaVax
Principal Investigator*

Treated 5 patients with DeltaRex-G through the Aveni **“Right to Try”** Individual Expanded Access program

In development, **CCNG1: a revolutionary tumor marker** that will identify patients who are likely to benefit from DeltaRex-G gene therapy



Dr. Sant P Chawla

Principal Investigator

In development, **Delta Rex-GT and DeltaVax** for personalized vaccination

Now available: Expanded Access for DeltaRex-G for Pancreatic Cancer and Sarcoma for an **Intermediate Size Population**

Y2019 FINANCIAL REPORT

COLLABORATORS



Keck School of
Medicine of **USC**



UC DAVIS
UNIVERSITY OF CALIFORNIA



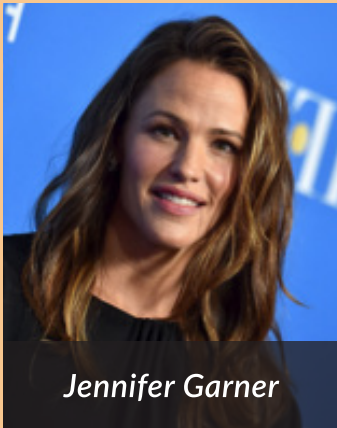
Profit & Loss Statement

January 1-December 31, 2019

Income	\$1,176,313
Expenses*	920,378
Net Income	255,935

* Use of proceeds are mainly for the manufacture of clinical grade targeted genetic medicine, DeltaRex-G, and for quality control / quality assurance by highly specialized experienced biotechnology personnel/consultants.

OUR DONORS



Capital Group
Trader Joe's
Secrest Wardle LLP
Counterpoint Biomedica LLC
Kekseliass Inc
The Gitlin Family Trust
ArtistsforAveni
James B. & Tina Finn
The Smet Family Trust
The Diamond Center
Corum Financial Services, Inc.
HK's Bar & Grill
Nazareno Electric Co., Inc.
Zamner Capital Management
DeltaNext-Gene, LLC

Jennifer Garner
Nena Zosa
Don A. Brigham
Kathy Tully
Tony & Lourdes Ong
Heather Gordon
Mark & Julie Masters
Sonny de Guzman
Harold Kneller
Timothy Parks
Richard Barker
Chris Zak
David Mercado

J Isaacs Charitable Trust/Hope's Fund UK
Lockheed Martin Foundation
The Adolf Weinberger Foundation
Fidelity Charitable Trust
Law Offices of Michael Karns
Thomas Makin's Family
James B. Finn Memorial
The Krebs Family Foundation
The Barth Family Trust
Howard Roofing Co., Inc.
Sierra Aviation Group
DiCarlo Concrete, Inc.
Mark Christopher Properties Inc.
Warren Clarks Custom Carpets
Kendrew

Frederick L. Hall
Norma Yaeger
Ritchie and Keri Tuazon
Erlinda M. Gordon
Jeffrey S. Burum
Alvin D. de Guzman's Family & Friends
Megan Holmes's Family
Leah Chelsky's Family
John Wiggle's Family & Friends
Vincent & Gisele Gonzales
Robert CaldwellKevin Huang
Ryan Watkins
Elmo & Richie Orlino

TO DONATE

credit card:
www.avenifoundation.org
click "contribute"
click "donate"

check:
Aveni Foundation
2811 Wilshire Blvd, Suite 777
Santa Monica CA 90405

wire:
Aveni Foundation
Chase Bank
Routing No.: 322 271 627
Account No.: 317 312 673
Swift CHASUS33